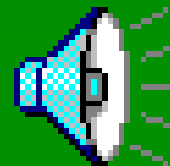
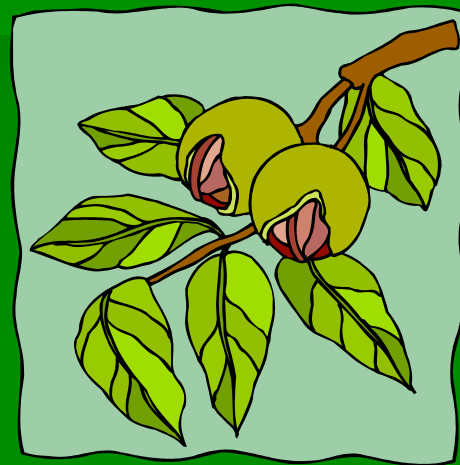


# 6 Kingdoms



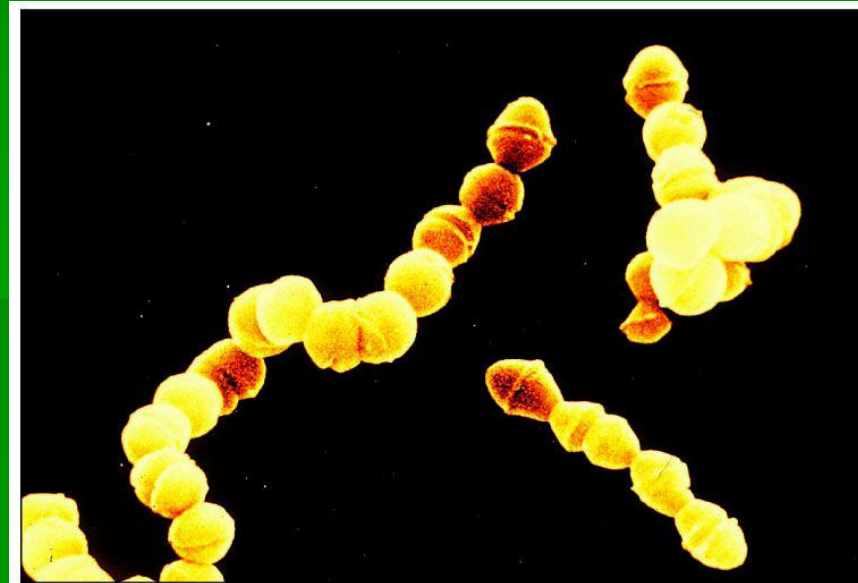
# Archaeobacteria

- One celled (unicellular)
- No separate nucleus (prokaryotic)
- “ancient bacteria”
- Live in extreme environments



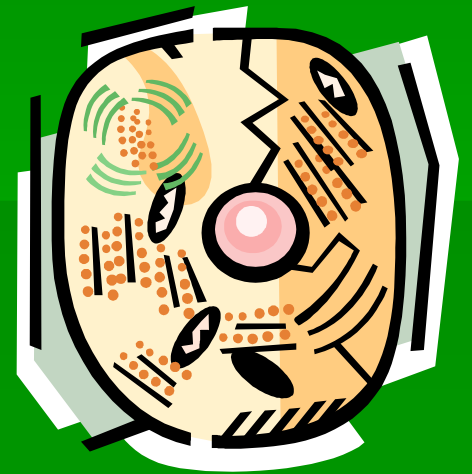
# Eubacteria

- One celled (unicellular)
- No separate nucleus (prokaryotic)
- Some are helpful; some are harmful



# Protist

- Most one celled (unicellular)
- Have nucleus and other cell structures (eukaryotic)
- Examples: algae, amoeba




# Fungus

- Many celled (multicellular)
- Cannot move
- Absorb nutrients from other organisms (heterotrophic)
- Examples:  
mushrooms, yeast,  
molds



# Plants

- Multicellular
- Cannot move
- Use energy from the sun to make sugars (autotrophic) 
- Examples: trees, flowers, ferns



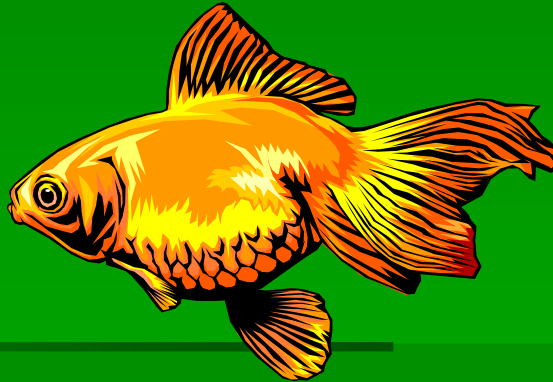
# Animal

- Multicellular
- Most can move
- Get energy by consuming other organisms (heterotrophic)
- Examples: invertebrates, fish, birds, mammals





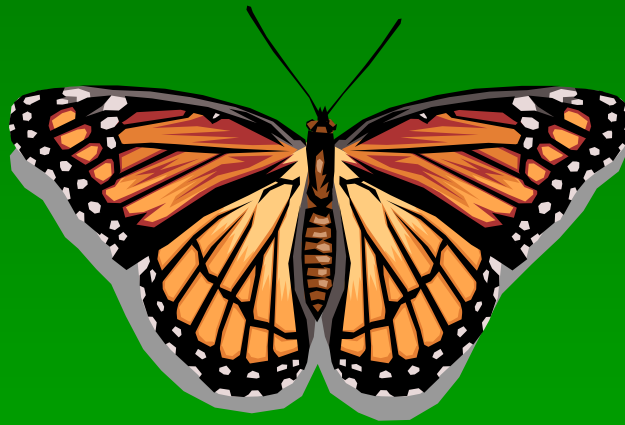
# Which is a picture of a Plant?



NEXT QUESTION

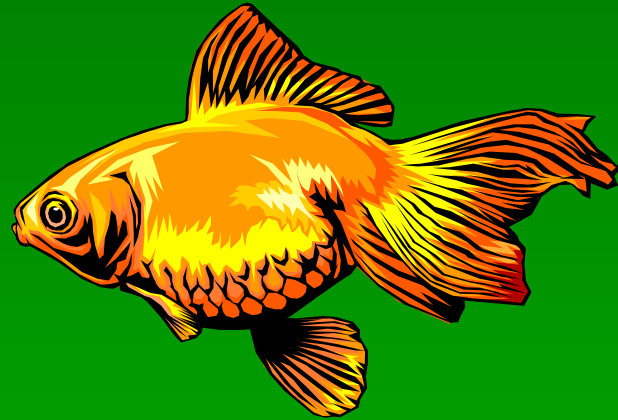


# Which is a picture of a Protist?



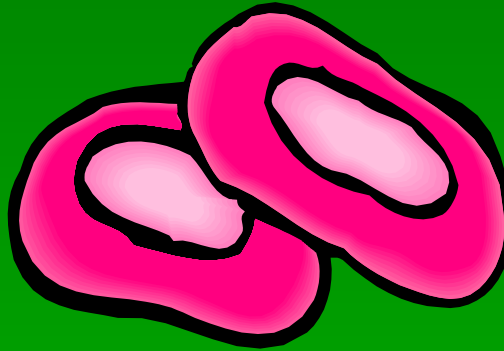
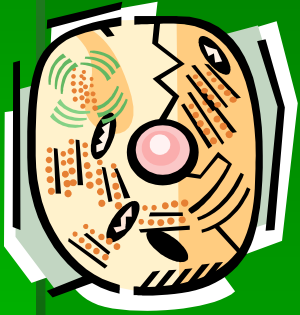
NEXT QUESTION

# Which is a picture of an Animal?



NEXT QUESTION

# Which is a picture of a Moneran?



NEXT QUESTION

# Which is a picture of a Fungus?



FINISHED

Copyright

